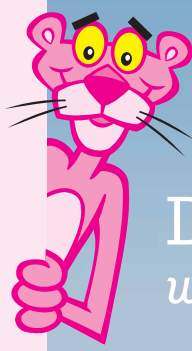




INNOVATIONS FOR LIVING®



Duration® Premium Shingles

with SureNail® Technology



Teak[†]



INNOVATIONS FOR LIVING™

Home sweet home.

It's the place where you want to feel the most comfortable. Safe. Protected. But no matter how much you love your house, it seems the work is never completely done. And if purchasing a new roof is on your to-do list, it may seem like a daunting task.

But you don't have to worry about it anymore. We're here to help.

You can feel confident about choosing Owens Corning™ Roofing products — Owens Corning has been a recognized leader in the building materials industry for over 70 years. We're known for making homes more comfortable, beautiful and durable. And it's likely you've invited our mascot, The Pink Panther,™ into your home already — our building products and famous PINK® Insulation have been used in millions of homes across the country.

Owens Corning Roofing and your contractor can make this a positive experience — an opportunity, really. This is your chance to choose a roof that not only has outstanding performance, but also has exceptional beauty. One that can transform the look of your entire home. So for years to come, you'll feel great every time you pull in the driveway.

Safe. Protected. Home.



Estate Gray†

Duration® Premium Shingles

Duration® Premium Shingles with patented SureNail® Technology have it all — bold, thick, dimensional appearance with impressive durability. These beautiful shingles are designed for long-lasting performance and carry a Limited Lifetime Warranty** for as long as you own your home, a 130-MPH Wind Resistance Limited Warranty* and an Algae Resistance Limited Warranty* available on a regional basis.



Desert Tan†



Brownwood†



Teak†



Driftwood†



Estate Gray†



Onyx Black†



The SureNail® Difference — a technological breakthrough in roofing. The innovative features of Owens Corning™ Duration® Premium Shingles with patented SureNail® Technology offer the following:

Breakthrough Design

Featuring a tough, woven engineered reinforcing fabric to deliver consistent fastening during installation.

Triple Layer Protection™

A unique “triple layer” of reinforcement occurs when the fabric overlays the common bond of the shingle laminate layers that offers excellent fastener holding power.

Superior Adhesion

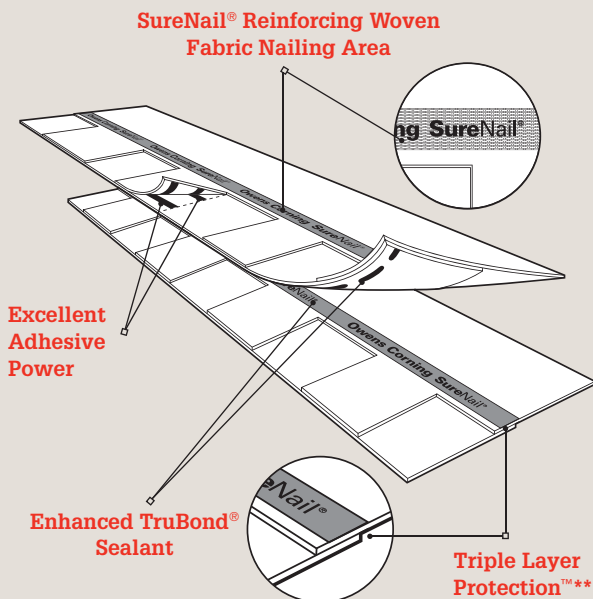
Our enhanced Tru-Bond®⁺⁺ sealant grips tightly to the engineered fabric nailing strip on the shingle below.

Excellent Adhesive Power

Specially formulated, wide adhesive bands help keep shingle layers laminated together.

Exceptional Wind Resistance

The industry’s first asphalt roofing shingle engineered to deliver 130-MPH wind warranty* performance with only 4 nails. 33% fewer nails are required for maximum warranty protection, which can mean fewer deck penetrations.



Product Attributes

Warranty Length*
Limited Lifetime†

Wind Resistance Limited Warranty*
130 MPH

Algae Resistance Limited Warranty*
10 Years

Tru PROtection® Non-Prorated Limited Warranty* Period
10 Years



Algae resistance available in areas shown in white.

Product Specifications

Nominal Size	13¼" x 39¾"
Exposure	5⅝"
Shingles per Square	64
Bundles per Square	4
Coverage per Square	98.4 sq. ft.

Applicable Standards and Codes

ASTM D 3462	ASTM D 228
ASTM E 108, Class A Fire	UL 790, Class A
ASTM D 3161, Class F Wind	ASTM D 7158, Class H Wind
ASTM D 3018, Type 1	CSA 123.5

* See actual warranty for complete details, limitations and requirements.

† Owens Corning strives to accurately reproduce photographs of shingles. Due to manufacturing variances, the limitations of the printing process and the variations in natural lighting, actual shingle colors and granule blends may vary from the photo. The pitch of your roof can also impact how a shingle looks on your home. We suggest that you view a roofing display or several shingles to get a better idea of the actual color. To accurately judge your shingle and color choice, we recommend that you view it on an actual roof with a pitch similar to your own roof prior to making your final selection. Color availability subject to change without notice. Ask your professional roofing contractor for samples of colors available in your area.

** This illustration depicts Triple Layer Protection and the amount of Triple Layer Protection may vary on a shingle-to-shingle basis.

‡ 40-Year Limited Warranty on commercial projects.

‡‡ Tru-Bond is a proprietary premium weathering-grade asphalt sealant that is blended by Owens Corning Roofing & Asphalt, LLC.

SureNail Technology U.S. Patent 7,836,654 and other patents pending.

The essentials for a healthy roofing system.

It takes more than just shingles to create a high-performance roof. It requires a system of products working together. Owens Corning™ Roofing Essentials® Accessory Products work with our shingles to produce a roofing system that helps provide maximum durability for a new roof — and the most comfort, enjoyment and protection for those who live beneath it.

- a** VentSure® Ventilation Products
- b** PINK® Fiberglas™ Blown-In Insulation
- c** Owens Corning™ Hip & Ridge Shingles
- d** Owens Corning™ Shingles
- e** Owens Corning™ Underlayment Products
- f** WeatherLock® Self-Sealing Ice & Water Barrier Products
- g** Owens Corning™ Starter Shingle Products
- h** Owens Corning™ Undereave Ventilation Products
- i** Owens Corning™ Illuminator™ Tube Skylight



Want to know more about Owens Corning™ products or find an Owens Corning™ Roofing Preferred Contractor in your area? It's easy to reach us:

1-800-GET-PINK® | www.owenscorning.com



OWENS CORNING ROOFING AND ASPHALT, LLC
ONE OWENS CORNING PARKWAY
TOLEDO, OHIO, USA 43659

1-800-GET-PINK®
www.roofing.owenscorning.com

Pub. No. 10017407. Printed in U.S.A. March 2012. THE PINK PANTHER™ & ©1964–2012 Metro-Goldwyn-Mayer Studios Inc. All Rights Reserved. The color PINK is a registered trademark of Owens Corning. ©2012 Owens Corning. (Compton, Portland)

Owens Corning™ Roofing Preferred Contractors are independent contractors and are neither affiliates nor agents of Owens Corning Roofing and Asphalt, LLC, or its affiliated companies.

